

# What is your SPARC Solaris Strategy?

Oracle will actively support Solaris until 2034. However, companies who run business critical applications on SPARC/Solaris, need to define a long-term strategy for these workloads today.

## But what direction should you go?

First you need to define what these workloads mean to your business?

### 1. Define what these workloads mean to your business?

- Are your applications highly sensitive or mission critical?
- Could they be moved to the cloud?

### 3. Consider Cloud based Applications?

Are the applications available as a cloud service? If yes, what?

- What are the initial costs?
- What are the long-term costs?
- What would your exit strategy be?

### 2. Stay on Oracle SPARC Solaris platforms?

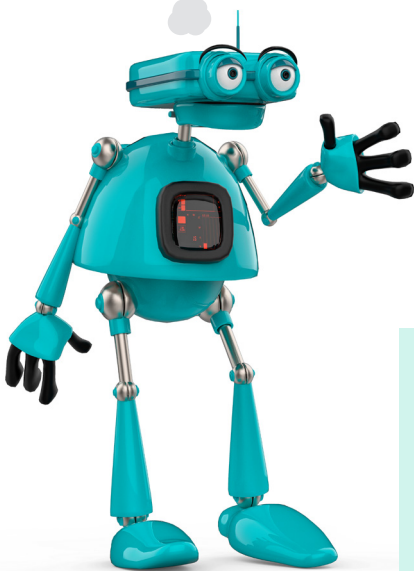
With Solaris support until 2034 that is 2 or 3 technical refreshes, right? And by upgrading you will benefit from

- Licence efficiency – Running Oracle Database on Oracle hardware offers a very cost-effective option
- Increased performance – With Oracle Databases and workloads engineered and optimised for SPARC/Solaris
- Enhanced security features such as “software in silicon”
- Lower operating, maintenance and administration costs
- But do you have the in-house skills to support this platform? No, what about remote support to bolster your in-house team
- And as a business are you not looking at a Cloud first strategy?

### 4. Move to Cloud

Your business' long-term strategy is cloud. But how do we achieve this with these workloads?

- Could you migrate to a Linux x86 platform first then migrate chosen workloads to the cloud?
- Could an appliance possibly help drive initial on-premise IT efficiencies and enable cloud migration?



### So many questions and directions you could take.

But one thing is for certain – if you are running your business-critical applications on SPARC/Solaris doing nothing is not an option.

### Let WTL the Solaris and Linux experts help you today.

Call **0121 486 1234** eMail [marketing@wtluk.com](mailto:marketing@wtluk.com) Visit [www.wtluk.com](http://www.wtluk.com)

**We Know Technology. We Know Oracle SPARC and Solaris.**



### About WTL

WTL are the Solaris and Linux experts. For over 30 years we have been successfully architecting, deploying and supporting companies like DPD, Toshiba and Siemens with their Solaris/Linux environments.