

What is your SPARC Solaris Strategy?

Oracle will actively support Solaris until 2037. However, companies who run business critical applications on SPARC/Solaris, need to define a long-term strategy for these workloads today.

But what direction should you go?

First you need to define what these workloads mean to your business?

1

Define what these workloads mean to your business?



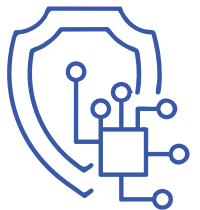
- Are your applications highly sensitive or mission critical?
- Could they be moved to the cloud?

2

Stay on Oracle SPARC Solaris platforms?

With Solaris support until 2037 that is 2 or 3 technical refreshes, right? And by upgrading you will benefit from

- Licence efficiency – Running Oracle Database on Oracle hardware offers a very cost-effective option
- Increased performance – With Oracle Databases and workloads engineered and optimised for SPARC/Solaris
- Enhanced security features such as “software in silicon”
- Lower operating, maintenance and administration costs



But do you have the in-house skills to support this platform?
No, what about remote support to bolster your in-house team
And as a business are you not looking at a Cloud first strategy?

3

Consider Cloud based Applications?

Are the applications available as a cloud service? If yes, what?

- What are the initial costs?
- What are the long-term costs?
- What would your exit strategy be?



4

Move to Cloud

Your business' long-term strategy is cloud.
But how do we achieve this with these workloads?

- Could you migrate to a Linux x86 platform first then migrate chosen workloads to the cloud?
- Could an appliance possibly help drive initial on-premise IT efficiencies and enable cloud migration?



About WTL

WTL are the Solaris and Linux experts. For over 35 years we have been successfully architecting, deploying and supporting companies like DPD, Toshiba and Siemens with their Solaris/Linux environments.

So many questions and directions you could take.

But one thing is for certain – if you are running your business-critical applications on SPARC/Solaris doing nothing is not an option.

Let WTL the Solaris and Linux experts help you today.

☎ 0121 486 1234

✉ marketing@wtluk.com

🌐 www.wtluk.com



We Know Oracle SPARC and Solaris